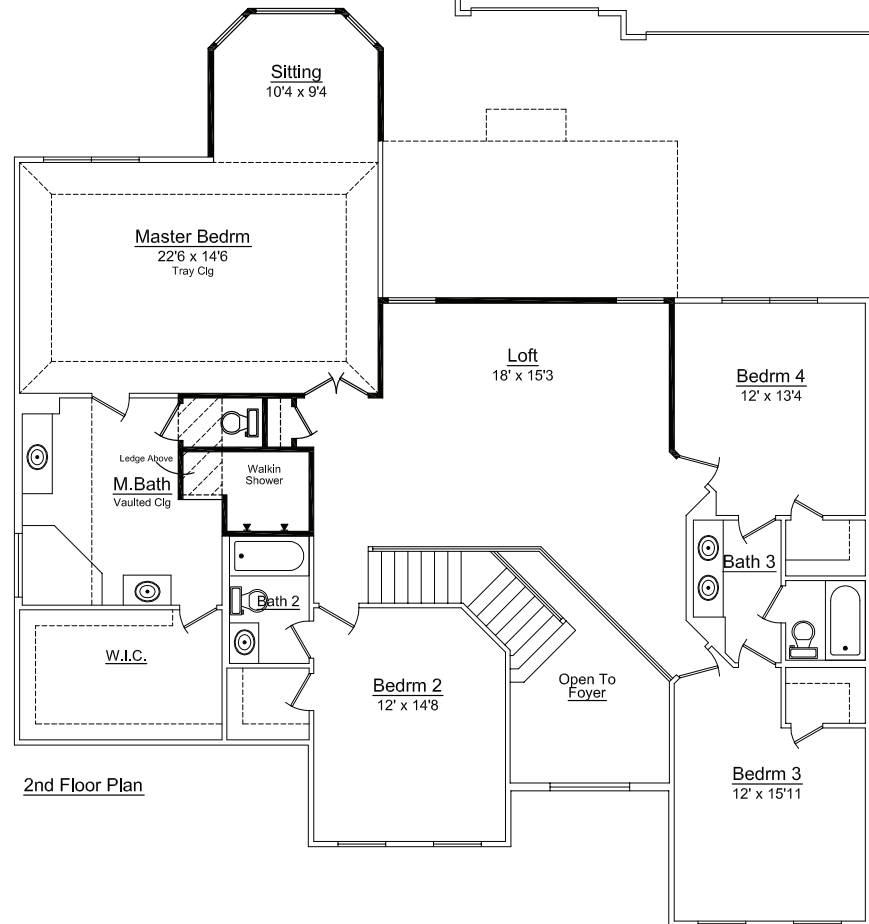
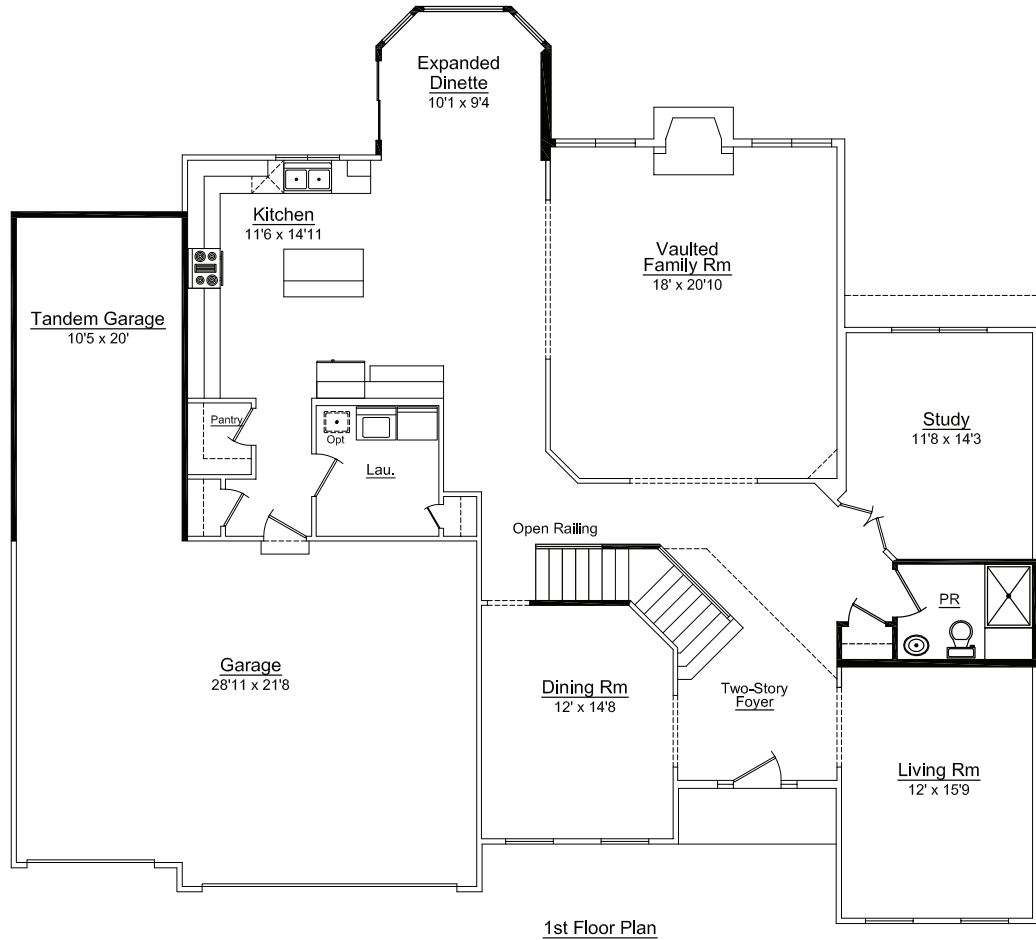


Birmingham Options

Available Options:

- Dinette bay +13 sq. ft.
- Expanded dinette/master sitting room +196 sq. ft.
- Sunroom +146 sq. ft.
- Loft +204 sq. ft.
- Living room sided bay +19 sq. ft.
- Master walk-in shower
- Powder room shower
- 9' Basement
- 4-Car tandem garage



Use this QR Code to find more information about Overstreet Builder's Birmingham model and other homes.



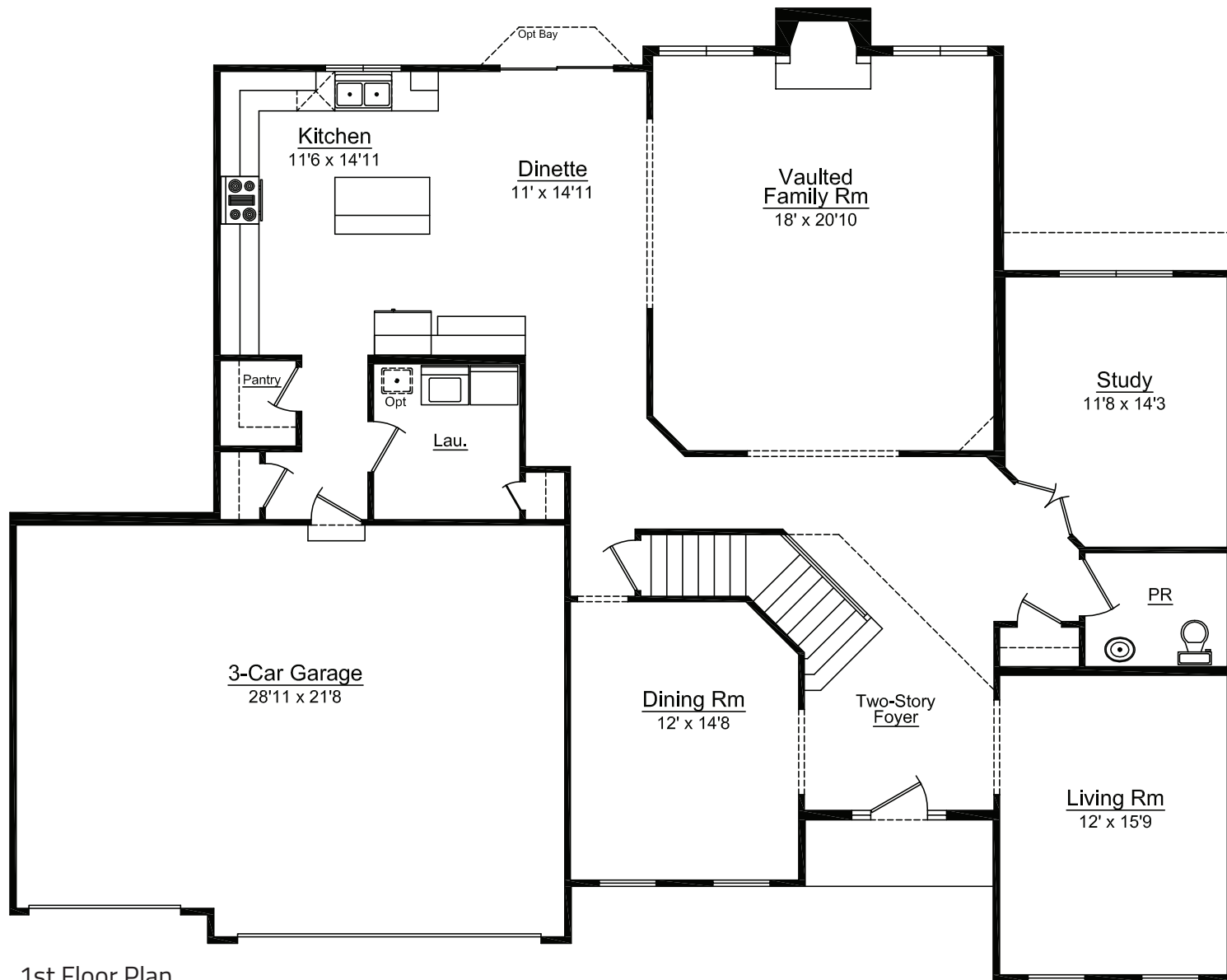
Note: All renderings and landscaping are artists conceptions only. All dimensions are approximate and are subject to change. In our continuing effort to provide for a superior quality product, we reserve the right to substitute items of equal or greater value. All designs and illustrations are property of Overstreet Builders, Inc. and are copyrighted under the same name. Any form of use or reproduction without written consent of Overstreet Builders, Inc. is prohibited. © 2019 Overstreet Builders, Inc.



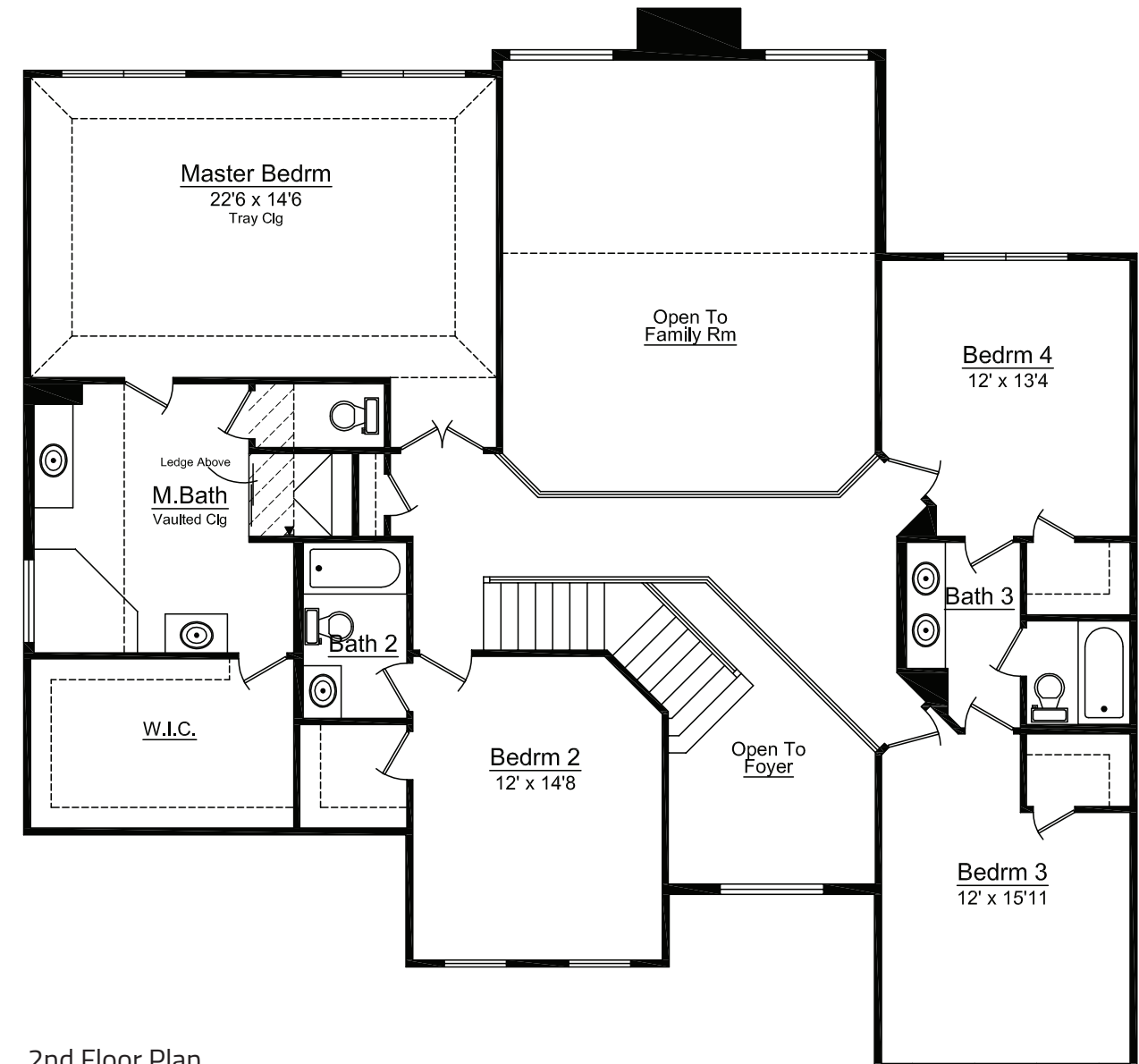
Birmingham

4 Bedrooms | 3.5 Bathrooms | 3-Car Garage | 3,503+ square feet





1st Floor Plan
1,891 sq. ft.



2nd Floor Plan
1,612 sq. ft.

The Birmingham features:

- 2-Story family room and foyer
- Angled staircase
- Split-entry
- Study
- Walk-in pantry

- 4' x 4' Oversized shower
- Oversized master suite
- Corner soaking tub
- His and her vanity
- Jack-N-Jill bathroom
- Walk-in closets

Overstreet Builders specializes in custom built homes in Chicago's suburbs and has been family owned and operated for over 55 years. We are dedicated to quality, integrity, and superior craftsmanship. We work with you every step of the way, starting with the design process through the final stages of construction.

