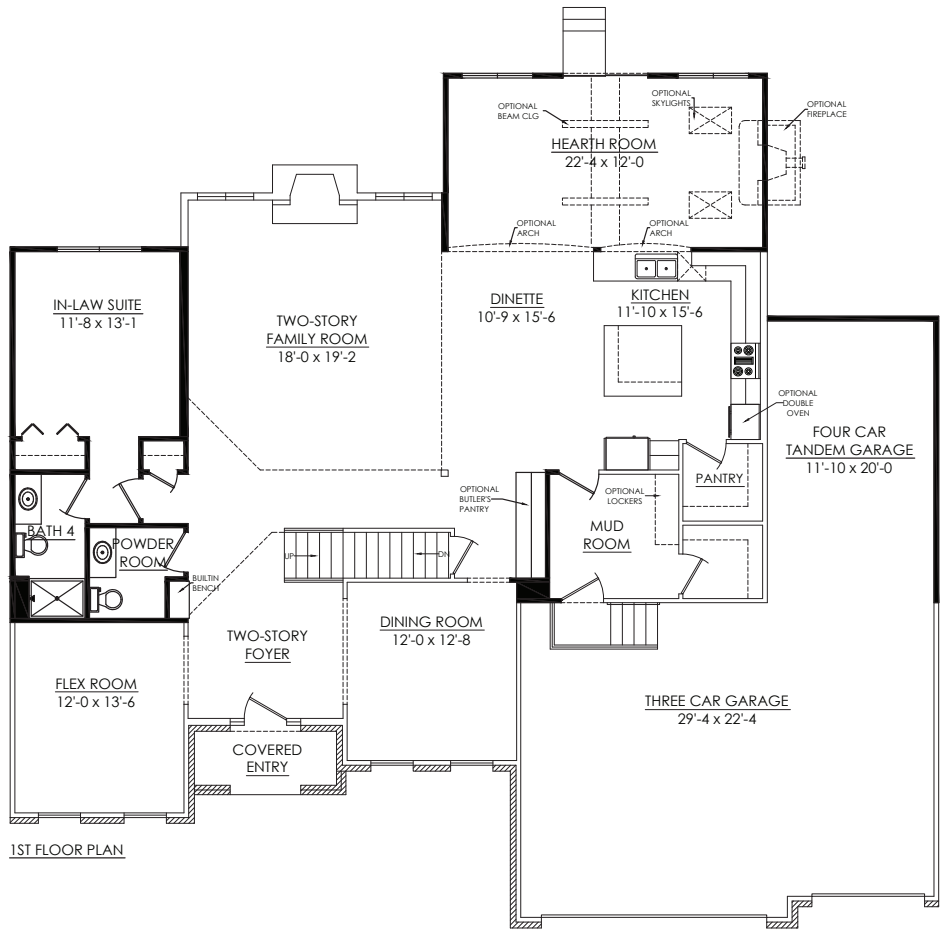
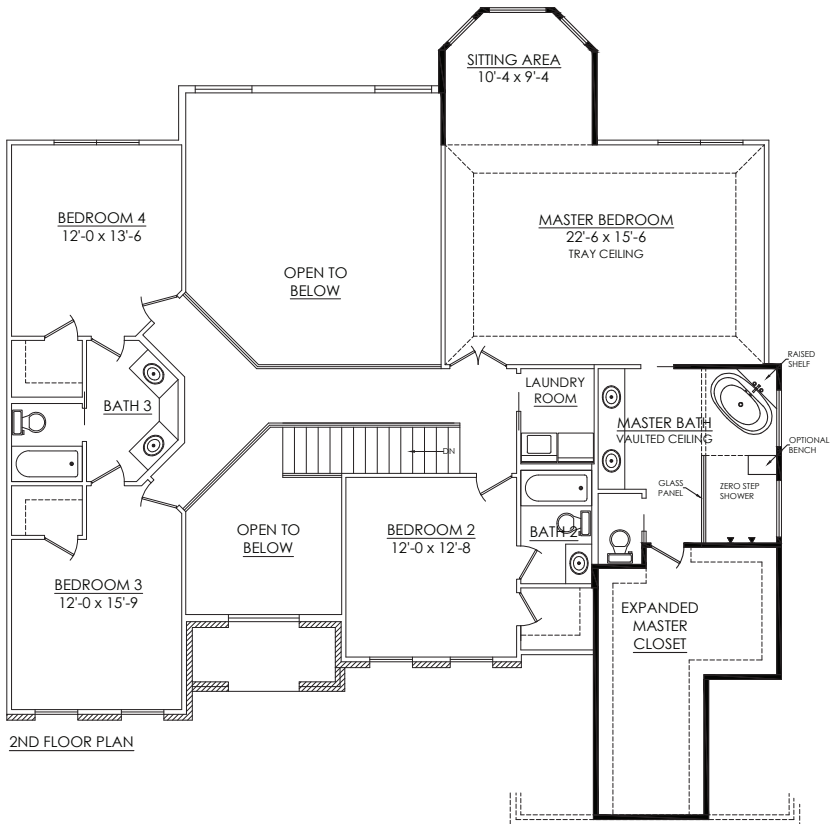


# Brighton Options

- Available Options:
- 4th Car tandem garage
  - Expanded dinette, +93 sq. ft.
  - Master suite sitting area, +93 sq. ft.
  - Garden room, +270 sq. ft.
  - Beamed ceiling
  - Skylights
  - Fireplace
  - Butler pantry near dinning room
  - Wet room in master bathroom
  - Expanded master closet
  - Lockers / bench at mudroom and alcove
  - First floor in-law suite



Overstreet Builders is a custom builder. If you want an option that is not shown, we will help you create it!



Use this QR Code to find more information about Overstreet Builder's Brighton model and other homes.



Note: All renderings and landscaping are artists' conceptions only. All dimensions are approximate and are subject to change. In our continuing effort to provide for a superior quality product, we reserve the right to substitute items of equal or greater value. All designs and illustrations are property of Overstreet Builders, Inc. and are copyrighted under the same name. Any form of use or reproduction without written consent of Overstreet Builders, Inc. is prohibited. © 2019 Overstreet Builders, Inc.



Brighton

4 Bedrooms | 4 Bathrooms | 3-Car Garage | 3,440+ square feet



Elevation A

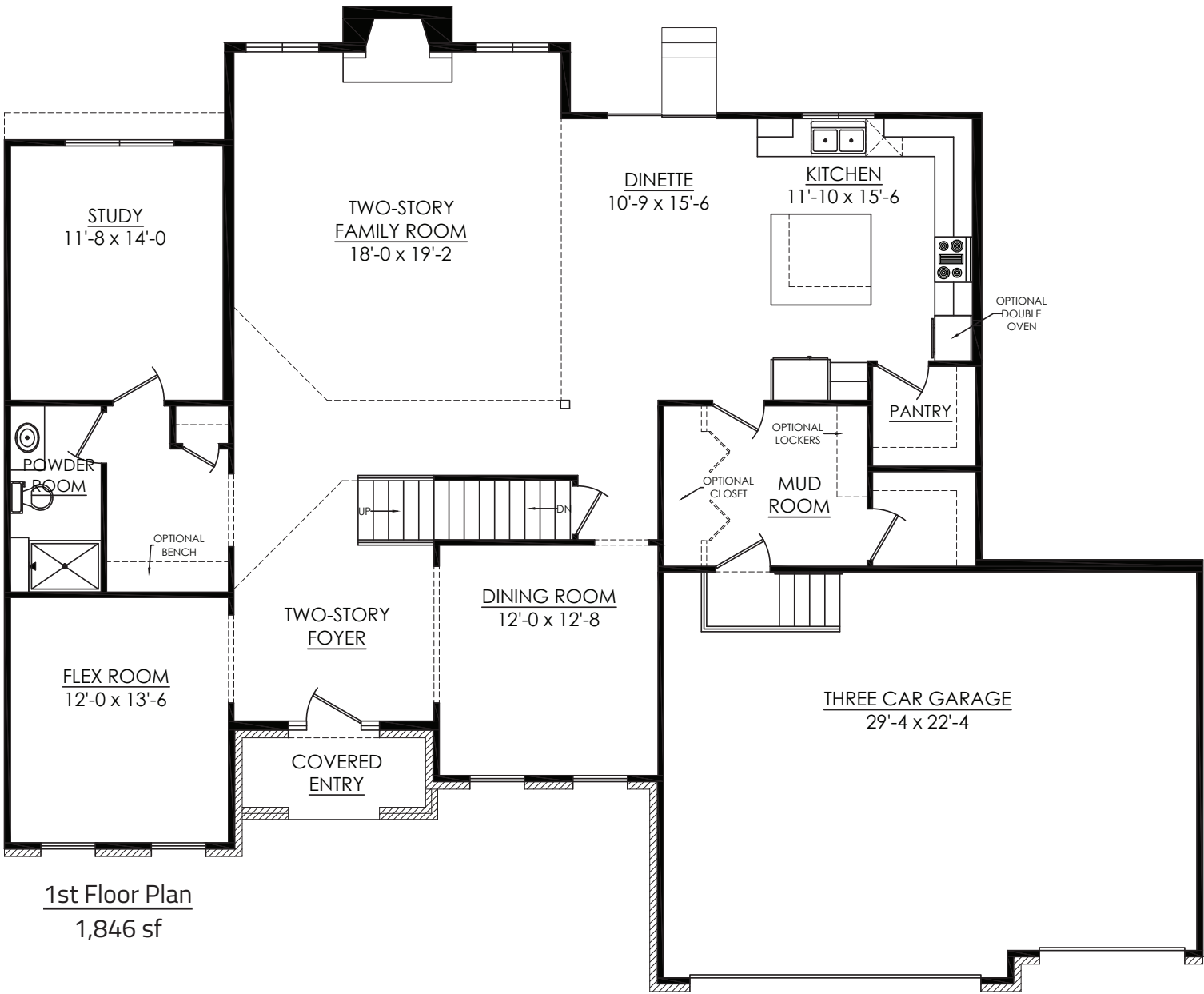


Elevation D

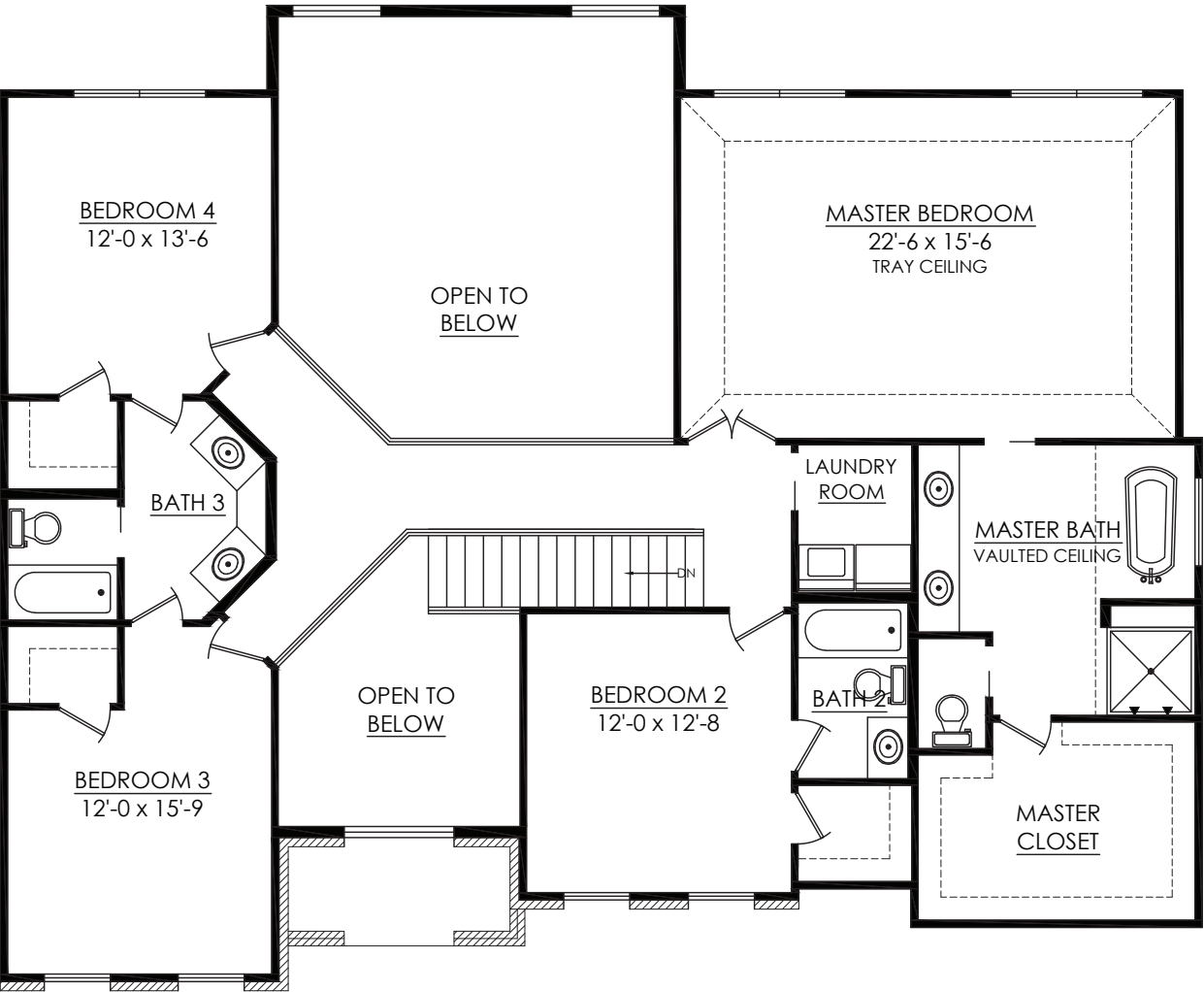


Elevation B





1st Floor Plan  
1,846 sf



2nd Floor Plan  
1,594 sf

The Brighton features:  
2-Story foyer  
2-Story family room  
Large open kitchen with huge island  
Walk-in pantry

Private study  
Alcove  
Jack-N-Jill bathroom with separate vanities  
Upstairs laundry  
Freestanding master tub

Overstreet Builders specializes in custom built homes in Chicago’s suburbs and has been family owned and operated for over 55 years. We are dedicated to quality, integrity, and superior craftsmanship. We work with you every step of the way, starting with the design process through the final stages of construction.

