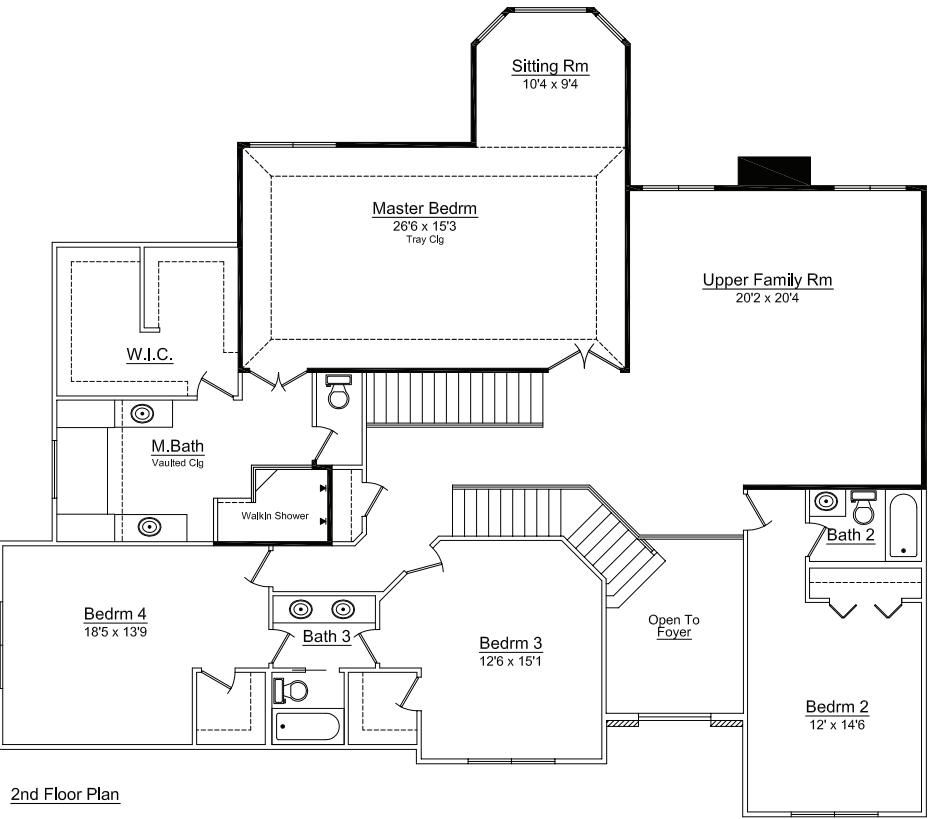
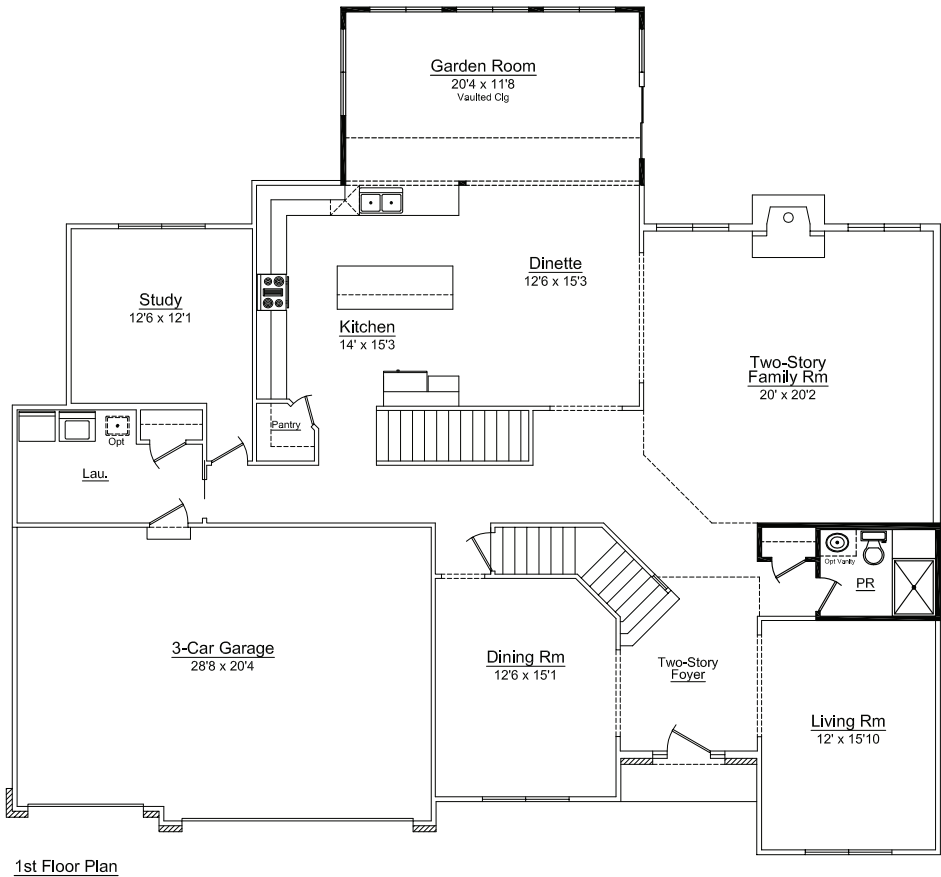


Emerson Options

Available Options:

- Dinette Bay
+13 sq. ft.
- Sided bay at living/dining room
+20 sq. ft.
- Expanded dinette/master sitting room
+192 sq. ft.
- Garden room
+252 sq. ft.
- Sunroom
+143 sq. ft.
- Upper floor family room
+394 sq. ft.
- Expanded master suite
- Walk-in shower in master bath
- Powder room shower
- 9' Basement



Use this QR Code to find more information about Overstreet Builder's Emerson model and other homes.



Note: All renderings and landscaping are artists' conceptions only. All dimensions are approximate and are subject to change. In our continuing effort to provide for a superior quality product, we reserve the right to substitute items of equal or greater value. All designs and illustrations are property of Overstreet Builders, Inc. and are copyrighted under the same name. Any form of use or reproduction without written consent of Overstreet Builders, Inc. is prohibited. © 2019 Overstreet Builders, Inc.



Emerson

4 Bedrooms | 3.5 Bathrooms | 3-Car Garage | 3,965+ square feet

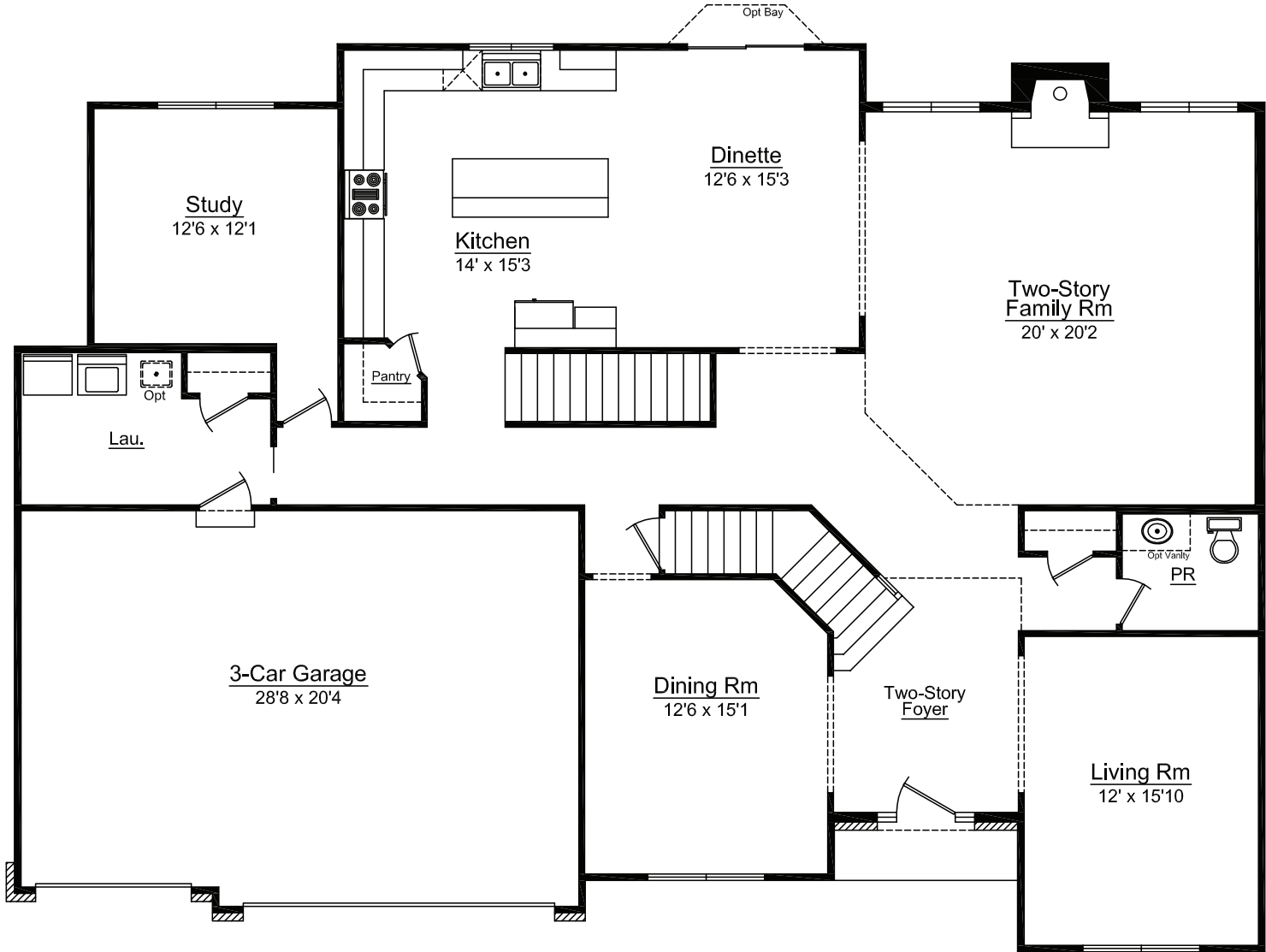


Elevation B



Elevation A





1st Floor Plan
2074 sf

- The Emerson features:
- Split entry

2-Story family room and foyer

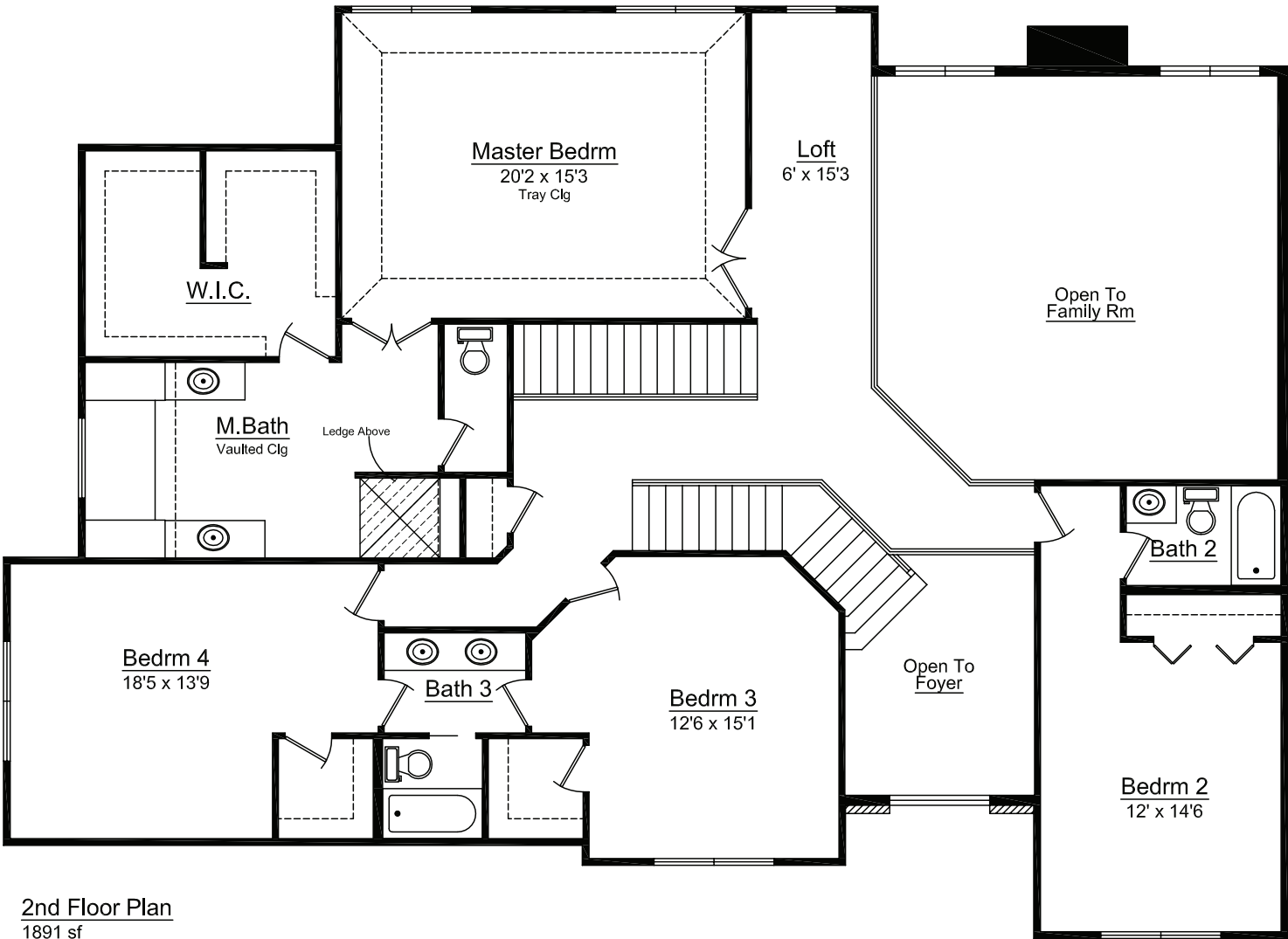
Angled staircase

Large kitchen with island

Walk-in pantry
- Jack-N-Jill bathroom

Loft

Double staircase



2nd Floor Plan
1891 sf

Overstreet Builders specializes in custom built homes in Chicago's suburbs and has been family owned and operated for over 55 years. We are dedicated to quality, integrity, and superior craftsmanship. We work with you every step of the way, starting with the design process through the final stages of construction.

