



Elevation A

# Georgetown

4 Bedrooms | 2.5 Bathrooms | 2-Car Garage | 3,070+ square feet



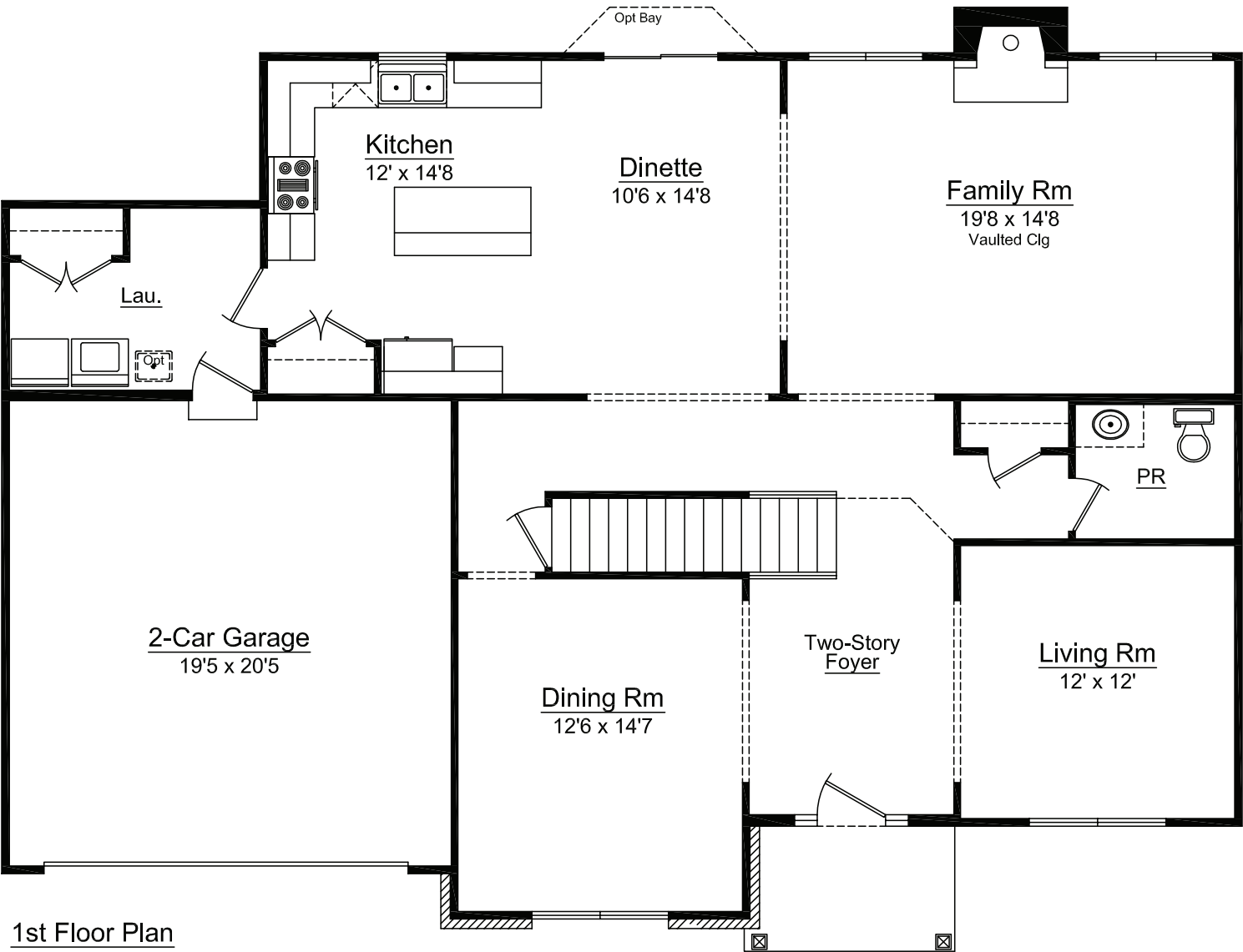
Elevation B



Elevation C

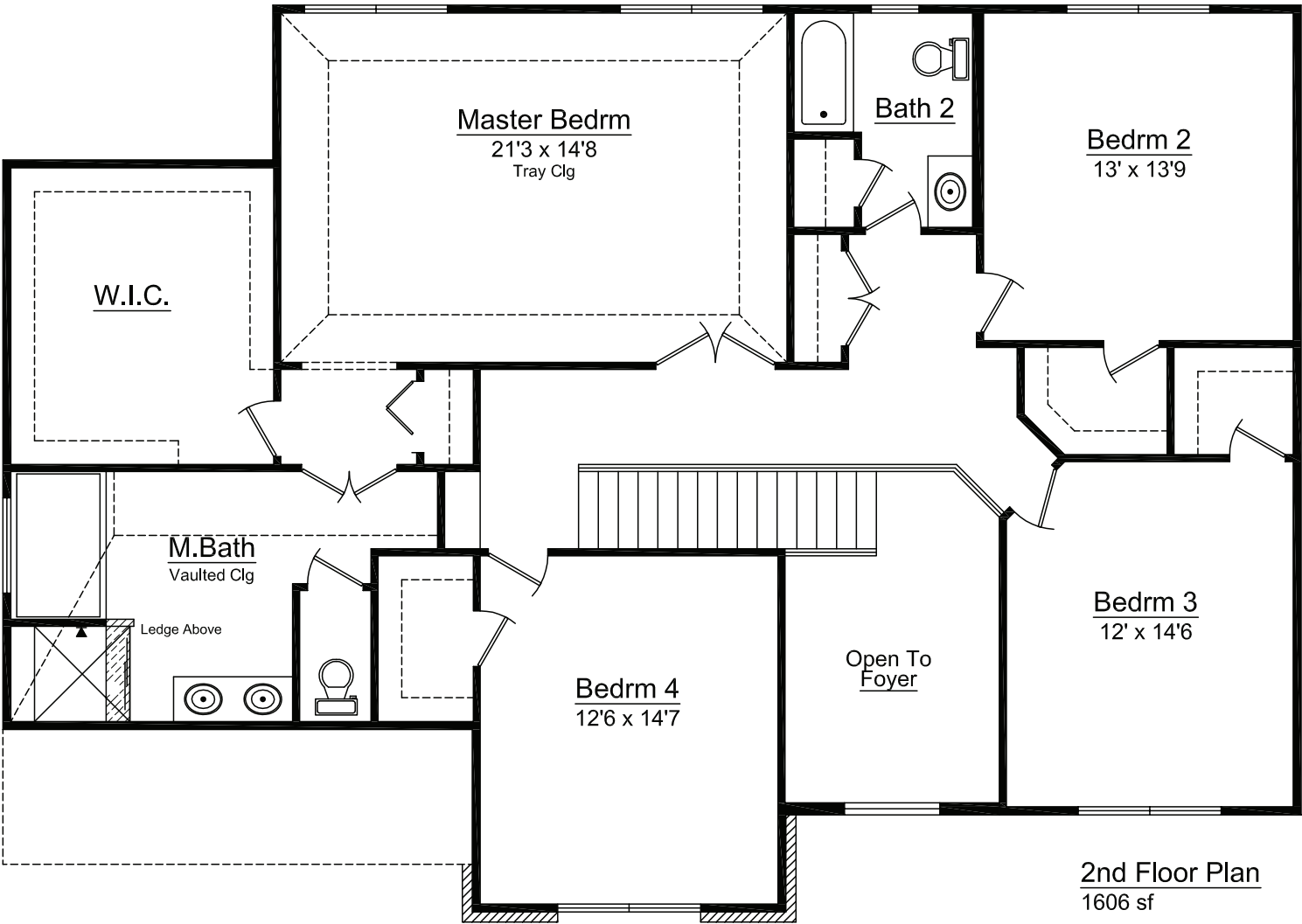






1st Floor Plan  
1464 sf

- The Georgetown features:
- Split-entry
  - 2-Story foyer
  - Huge master bedroom
  - Oversized master walk-in closet
  - Oversized master shower and soaking tub
  - His and her vanity



2nd Floor Plan  
1606 sf

Overstreet Builders specializes in custom built homes in Chicago's suburbs and has been family owned and operated for over 50 years. We are dedicated to quality, integrity, and superior craftsmanship. We work with you every step of the way, starting with the design process through the final stages of construction.



# Georgetown Options

Available Options:

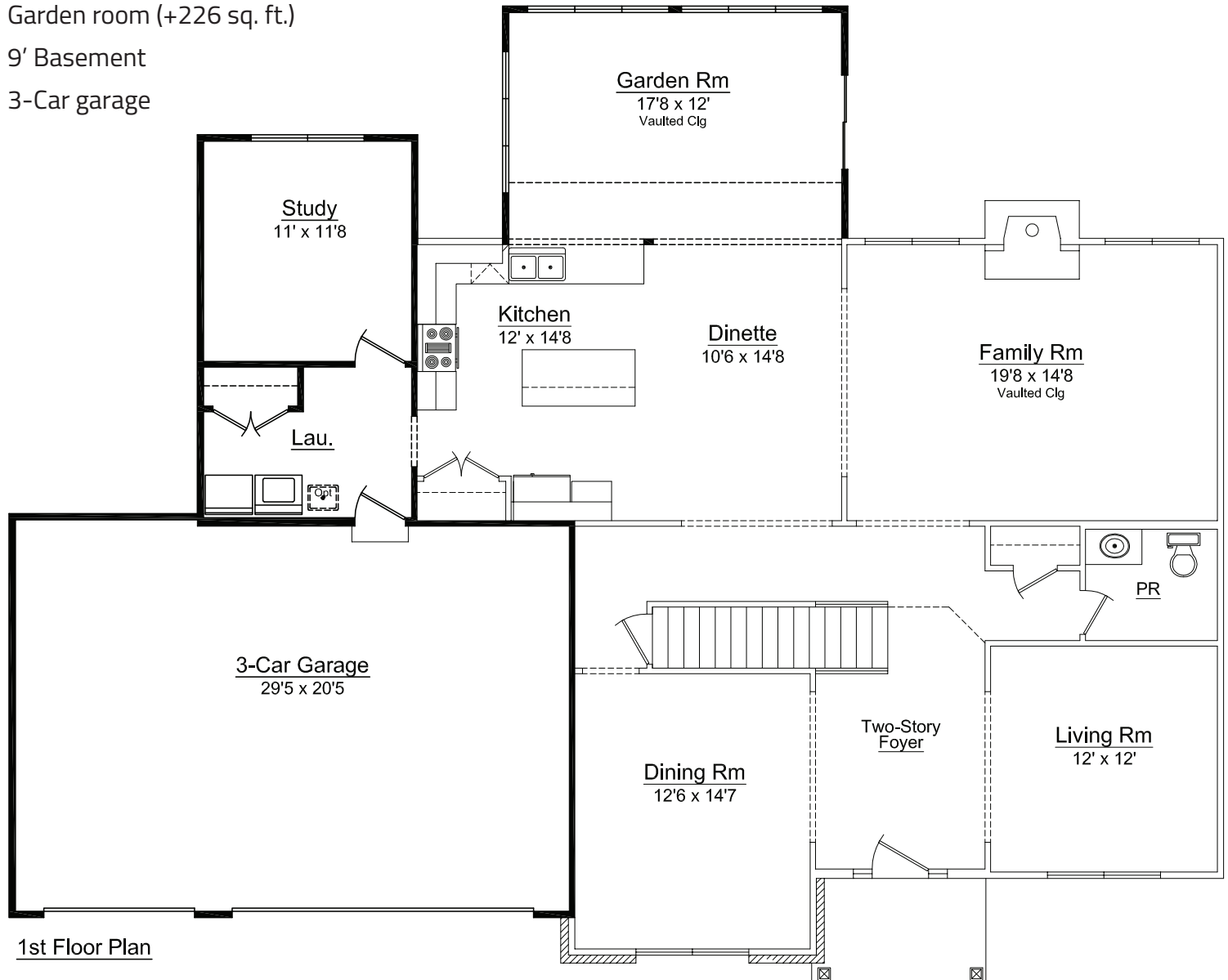
Dinette bay (+13 sq. ft.)

Study (+139 sq. ft.)

Garden room (+226 sq. ft.)

9' Basement

3-Car garage



Use this QR Code to find more information about Overstreet Builder's Georgetown model and other homes.



Note: All renderings and landscaping are artists conceptions only. All dimensions are approximate and are subject to change. In our continuing effort to provide for a superior quality product, we reserve the right to substitute items of equal or greater value. All designs and illustrations are property of Overstreet Builders, Inc. and are copyrighted under the same name. Any form of use or reproduction without written consent of Overstreet Builders, Inc. is prohibited. © 2015 Overstreet Builders, Inc.



[www.OverstreetBuilders.com](http://www.OverstreetBuilders.com) ■ 630-226-0460

