

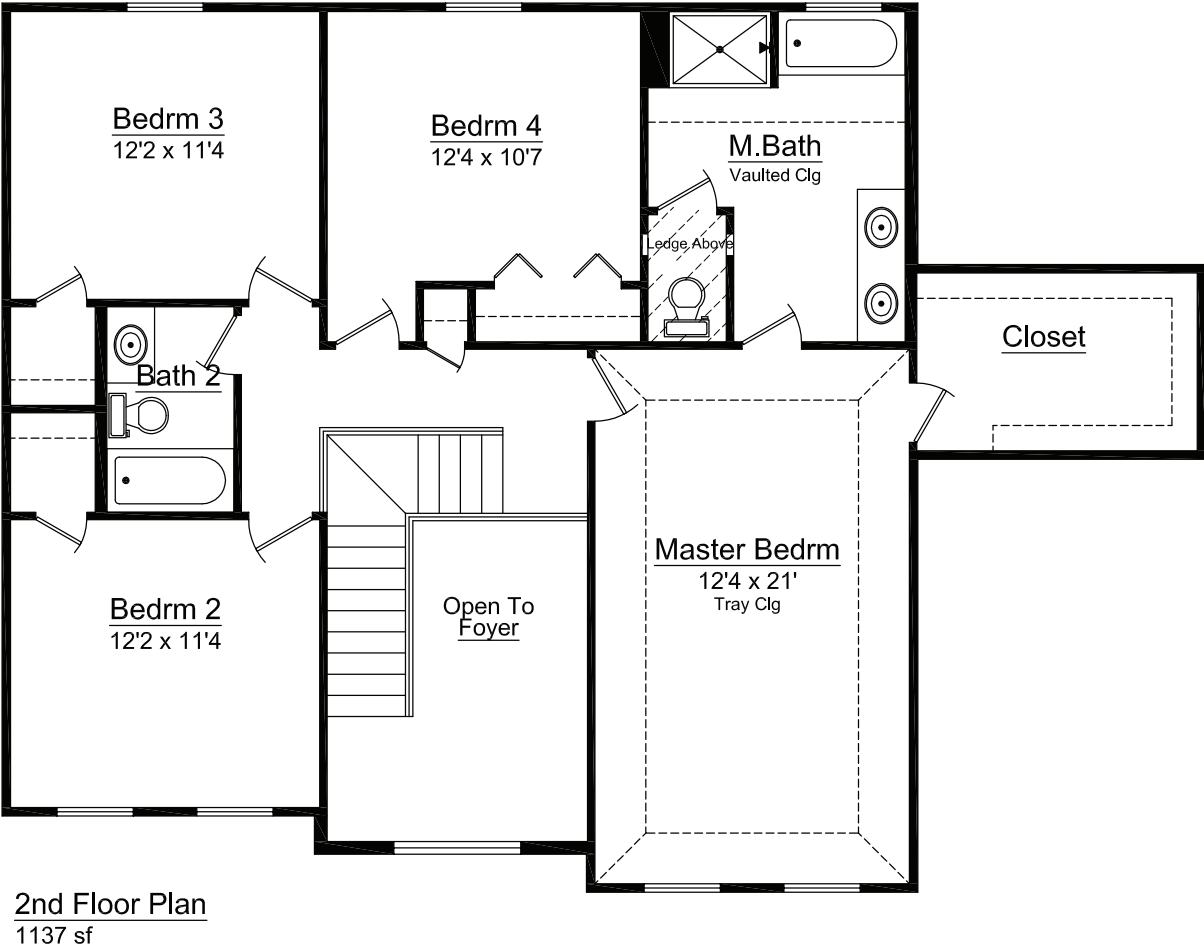
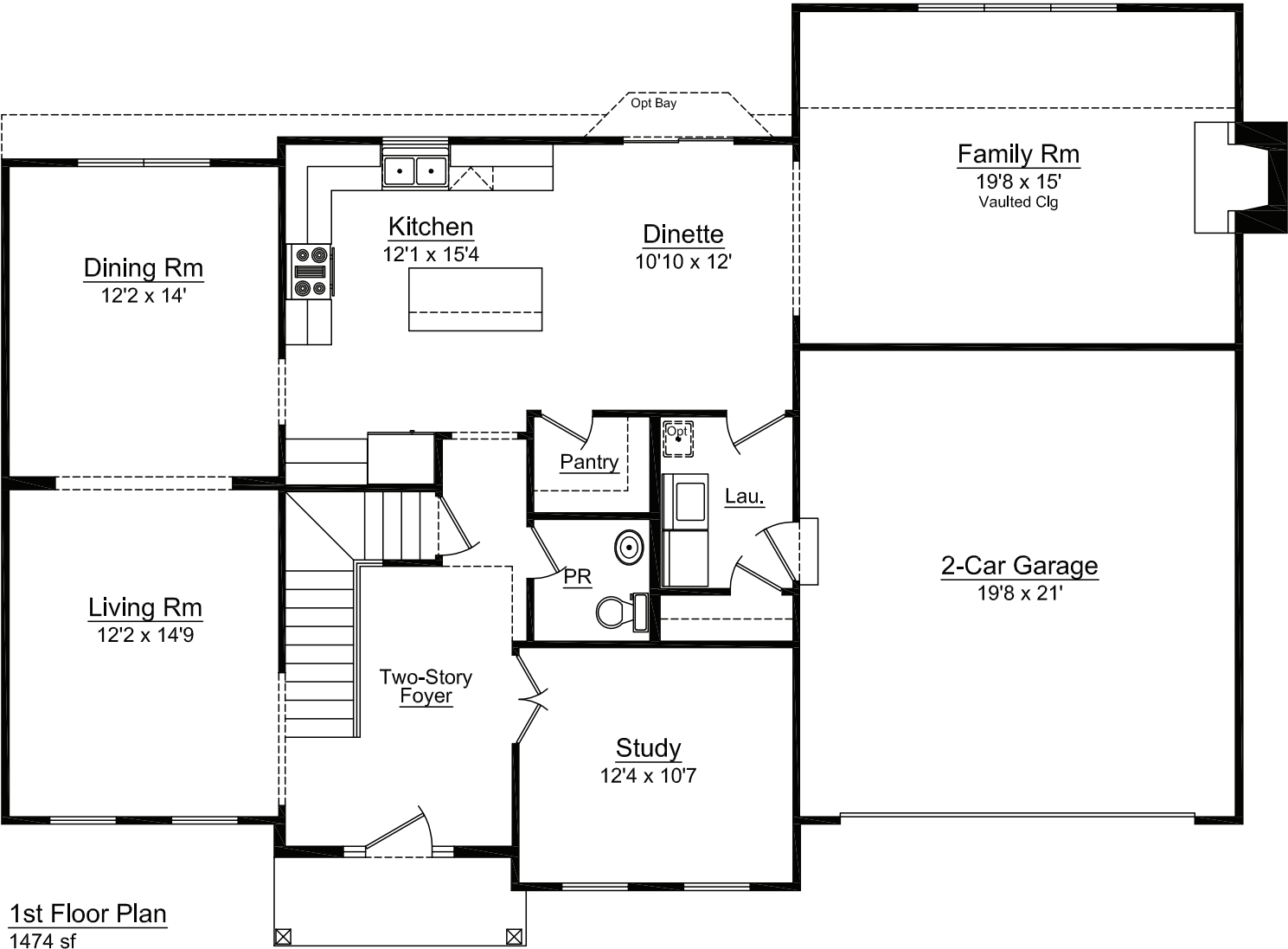


# Hartford

4 Bedrooms | 2.5 Bathrooms | 2-Car Garage | 2,611+ square feet







- The Hartford features:
- Formal living and dining rooms
  - Spacious family room
  - 2-Car garage
  - Large master bath
  - His and her vanity

Overstreet Builders specializes in custom built homes in Chicago's suburbs and has been family owned and operated for over 50 years. We are dedicated to quality, integrity, and superior craftsmanship. We work with you every step of the way, starting with the design process through the final stages of construction.



# Hartford Options

Available Options:

Dinette bay  
+13 sq. ft.

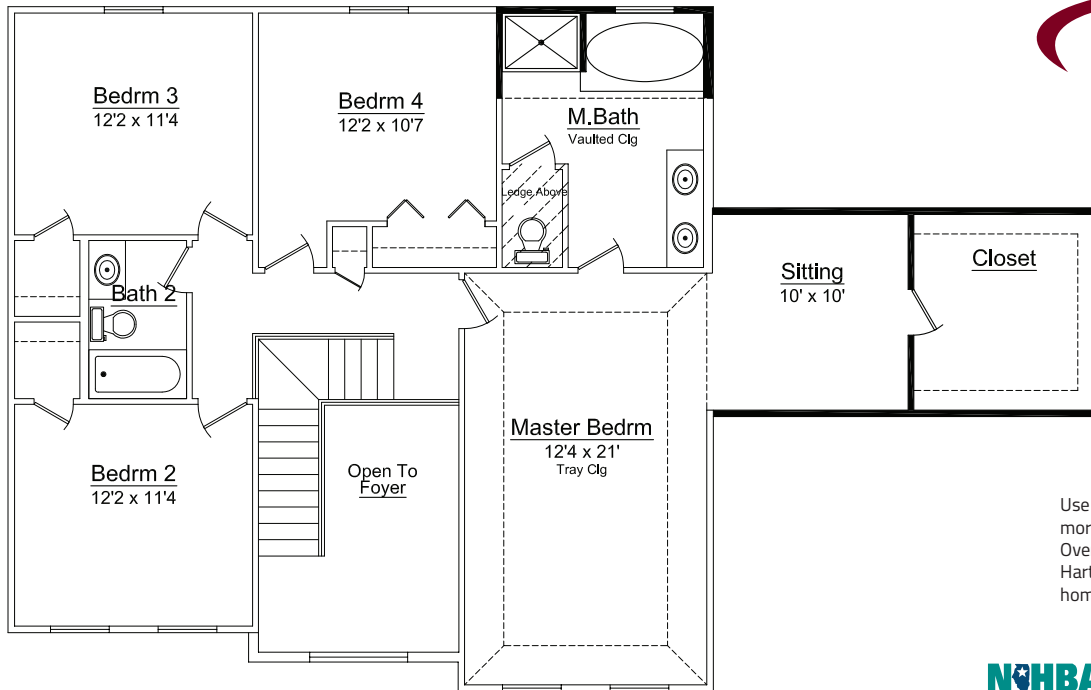
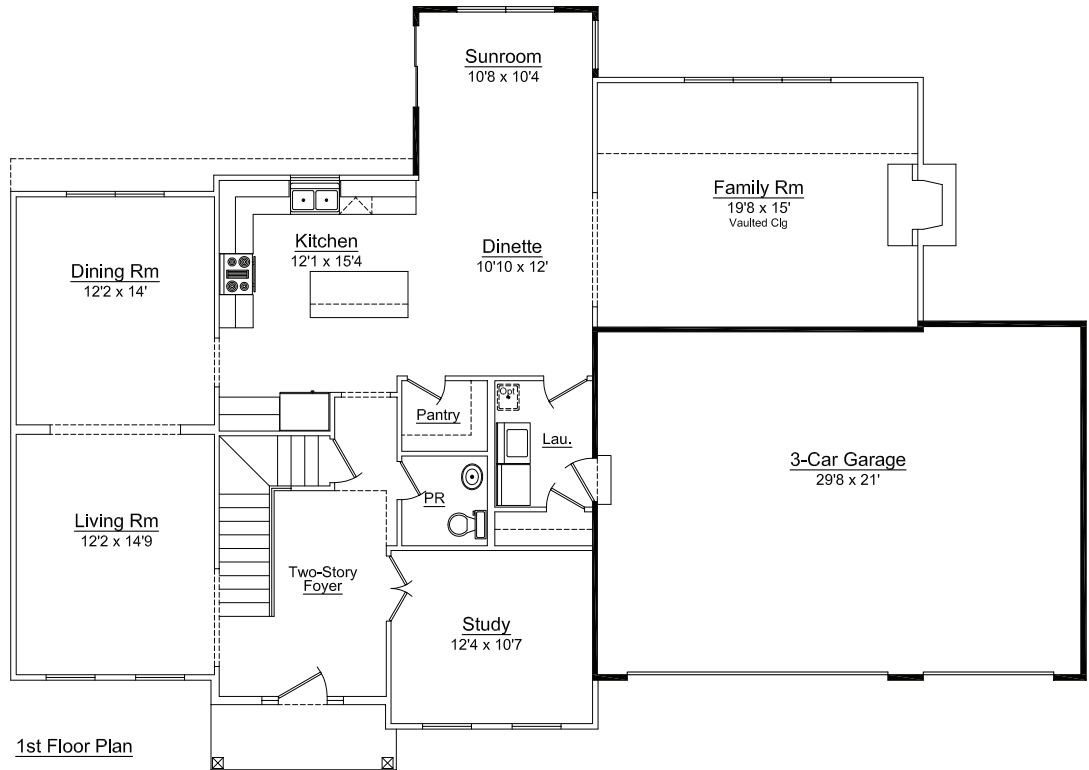
Sunroom  
+117 sq. ft.

Master sitting room  
+126 sq. ft.

Oversized tub in  
master bath

9' Basement

3-Car garage



Use this QR Code to find more information about Overstreet Builder's Hartford model and other homes.



Note: All renderings and landscaping are artists' conceptions only. All dimensions are approximate and are subject to change. In our continuing effort to provide for a superior quality product, we reserve the right to substitute items of equal or greater value. All designs and illustrations are property of Overstreet Builders, Inc. and are copyrighted under the same name. Any form of use or reproduction without written consent of Overstreet Builders, Inc. is prohibited. © 2015 Overstreet Builders, Inc.