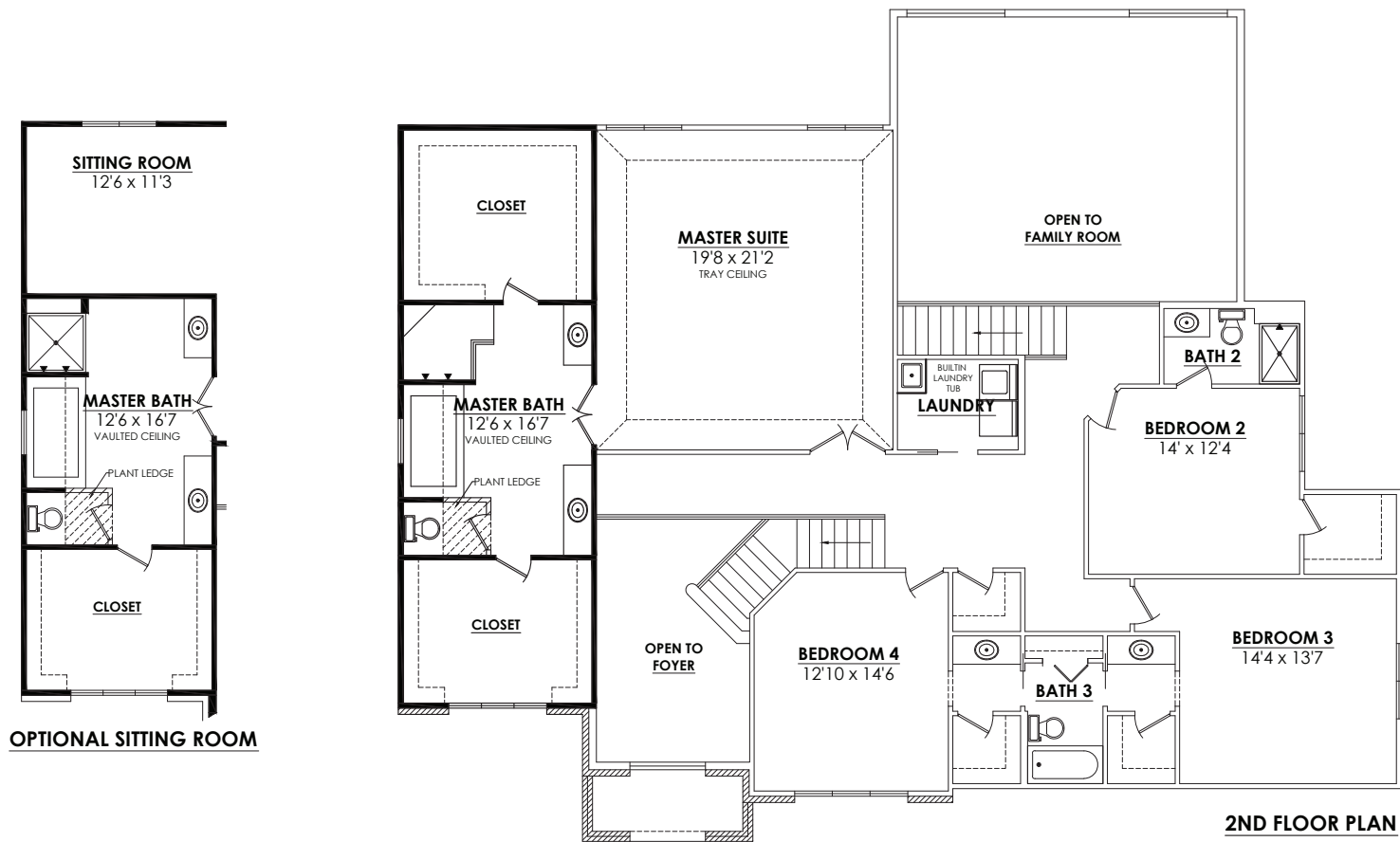


Bordeaux Options



- Available Options:
- Double door at study / family room
 - Full powder room
 - Lockers in mudroom
 - In-law suite
 - Built in laundry tub
 - Walk in shower in master bath
 - Sitting room in master bedroom



Use this QR Code to find more information about Overstreet Builder's Bordeaux model and other homes.



Note: All renderings and landscaping are artists' conceptions only. All dimensions are approximate and are subject to change. In our continuing effort to provide for a superior quality product, we reserve the right to substitute items of equal or greater value. All designs and illustrations are property of Overstreet Builders, Inc. and are copyrighted under the same name. Any form of use or reproduction without written consent of Overstreet Builders, Inc. is prohibited. © 2018 Overstreet Builders, Inc.



Elevation B

Bordeaux

4 Bedrooms | 3 ½ Bathrooms | 3-Car Garage | 4,491+ square feet

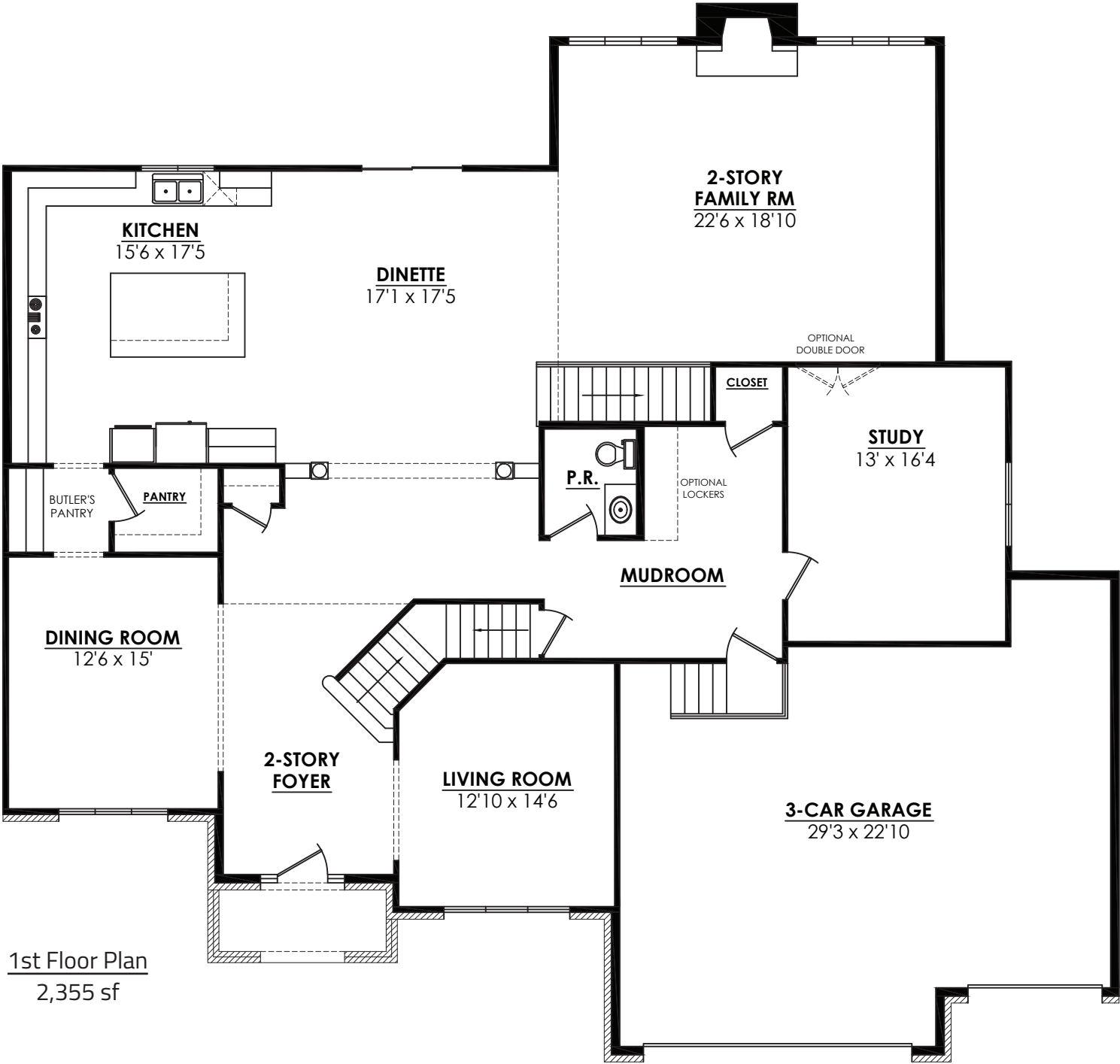


Elevation A



Elevation C





- The Bordeaux features:
- 2-Story foyer

2-Story family room

Large open kitchen with oversize island

Butler pantry
- Large walk-in pantry

Huge mudroom

Dual staircase

Upper laundry room

Jack-N-Jill bath
- Huge his and her walk-in closet

Additional storage in garage

Overstreet Builders specializes in custom built homes in Chicago's suburbs and has been family owned and operated for over 55 years. We are dedicated to quality, integrity, and superior craftsmanship. We work with you every step of the way, starting with the design process through the final stages of construction.

