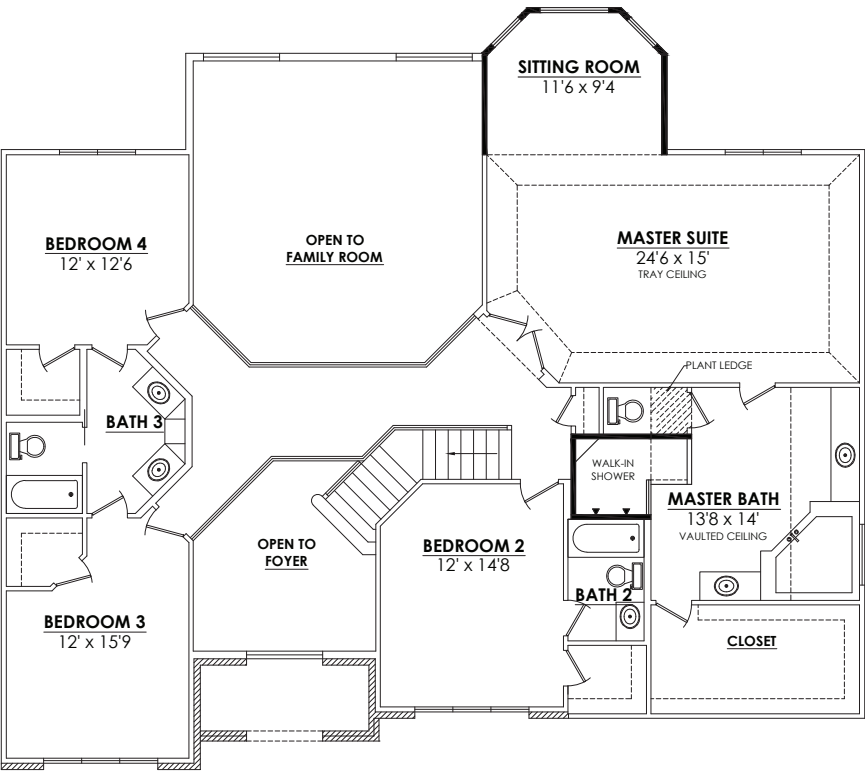
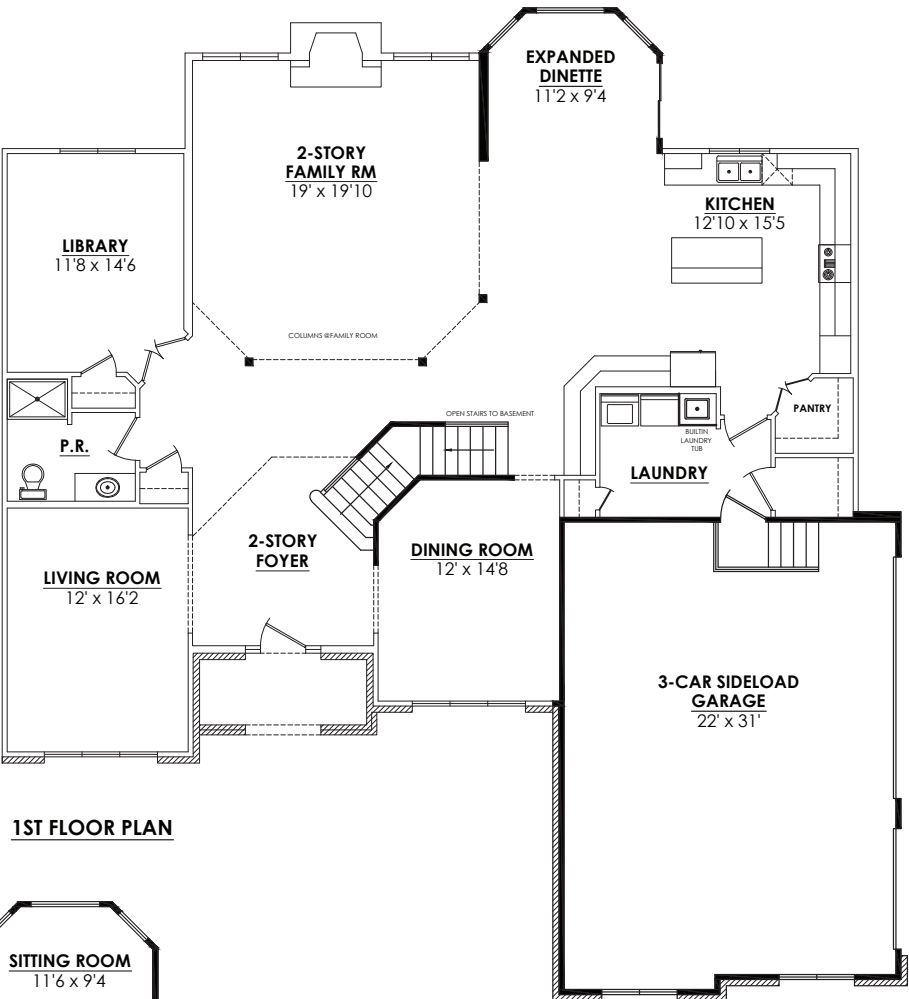


Castleby Options

- Available Options:
- Expanded dinette
 - Remove walls at family room / add columns
 - Open stair / finish to basement
 - Built in laundry tub
 - Sitting room
 - Walk-in shower
 - Sideloader garage

Overstreet Builders is a custom builder. If you want an option that is not shown, we will help you create it!



Use this QR Code to find more information about Overstreet Builder's Castleby model and other homes.



Note: All renderings and landscaping are artists' conceptions only. All dimensions are approximate and are subject to change. In our continuing effort to provide for a superior quality product, we reserve the right to substitute items of equal or greater value. All designs and illustrations are property of Overstreet Builders, Inc. and are copyrighted under the same name. Any form of use or reproduction without written consent of Overstreet Builders, Inc. is prohibited. © 201 Overstreet Builders, Inc.



Castleby

4 Bedrooms | 4 Bathrooms | 3-Car Garage | 3,665+ square feet



Elevation A



Elevation C



Elevation D



Elevation E

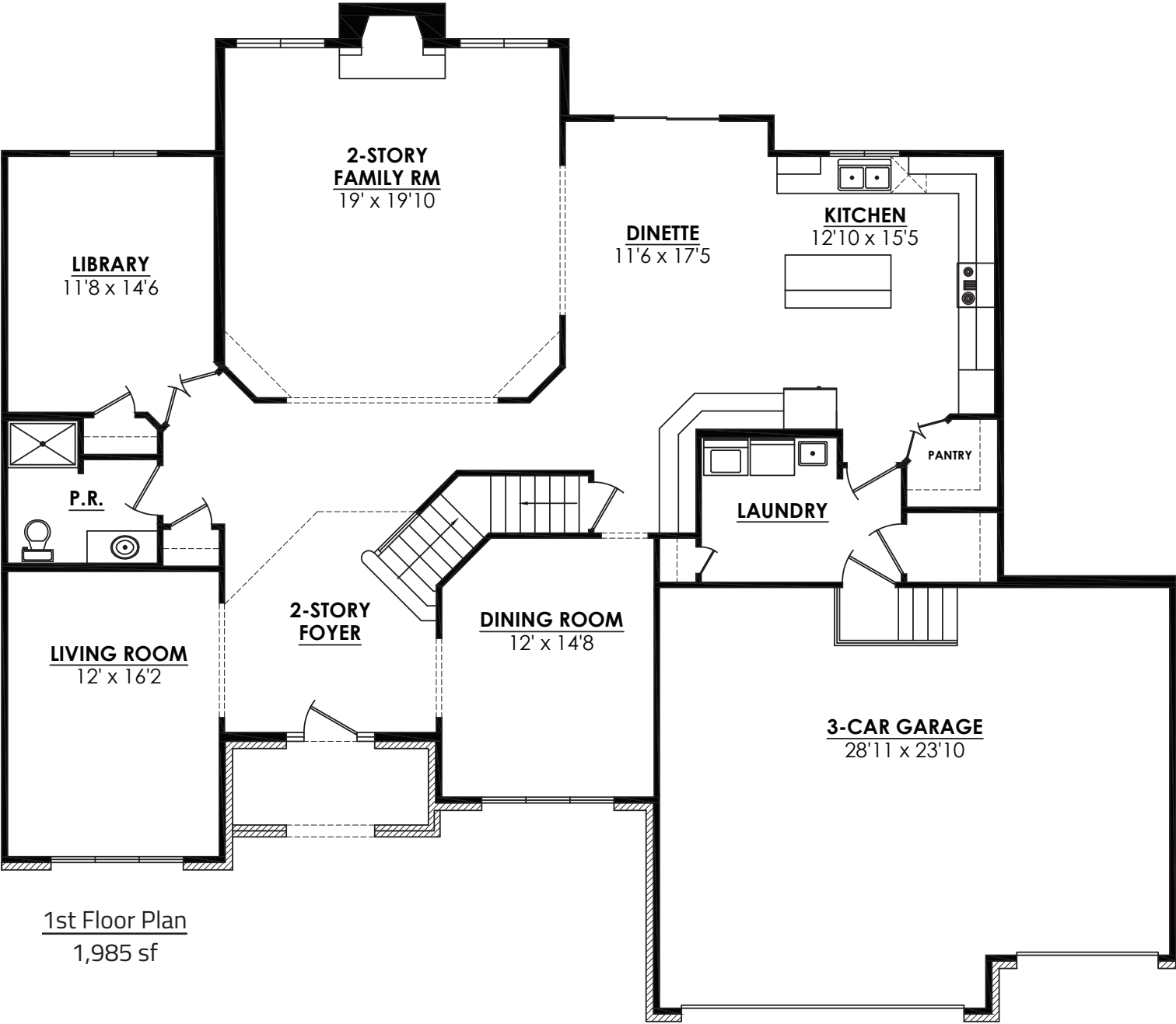


www.overstreetbuilders.com • 630-226-0460



www.overstreetbuilders.com • 630-226-0460





- The Castleby features:
- 4 Bedrooms
 - 4 Bathrooms
 - 3-Car garage
 - Fireplace
 - 2-Story foyer
 - 2-Story family room
 - Large open kitchen with island
 - Walk-in pantry
 - Butler pantry
 - Library / 1st floor bedroom
 - Angled staircase

Overstreet Builders specializes in custom built homes in Chicago's suburbs and has been family owned and operated for over 55 years. We are dedicated to quality, integrity, and superior craftsmanship. We work with you every step of the way, starting with the design process through the final stages of construction.

